

ScanX Swift View

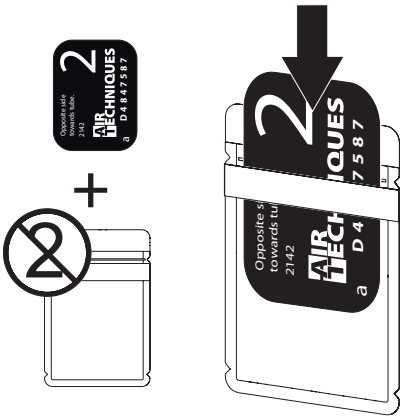
Quick Reference Guide

The following information is supplementary to the device Installation and Operating Instructions.

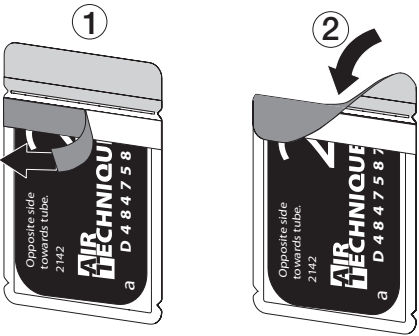
Always refer to the Installation and Operating Instructions of the appropriate device in which important information is detailed, e. g. Safety Instructions, Set-up, Electrical Connections, Disinfection, Cleaning, etc.

1 Scanning the image data via a computer

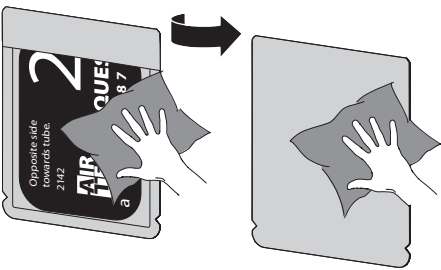
1.



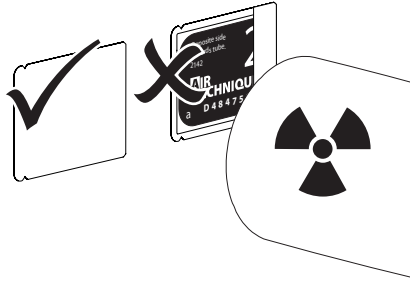
2.



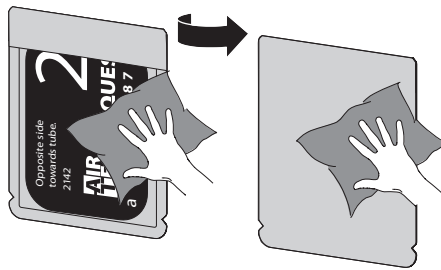
3.



4.



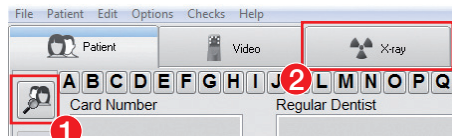
5.



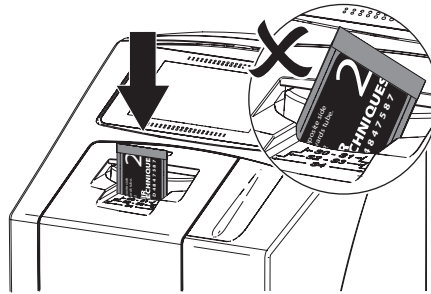
6.



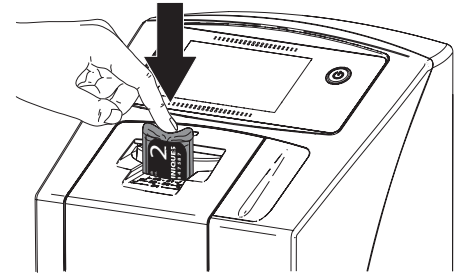
7.



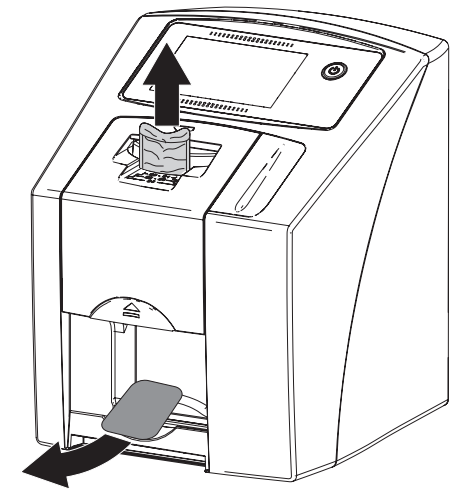
8.



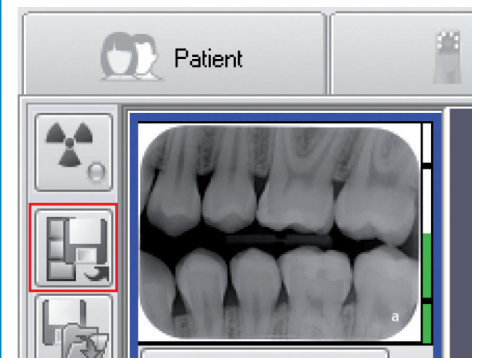
9.



10.



11.



Corporate Headquarters
1295 WALT WHITMAN ROAD
MELVILLE, NEW YORK 11747- 3062

G8504



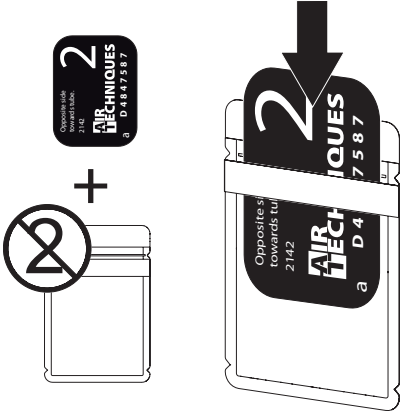
1 / 4

1707V001

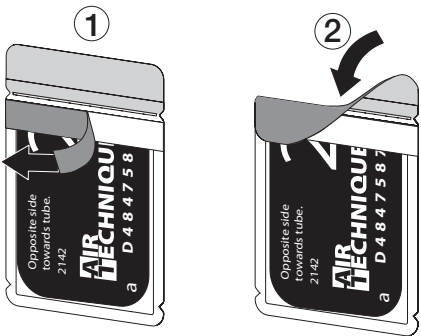
AIR TECHNIQUES equipped for life®

2 Scanning image data via the touch screen on the unit

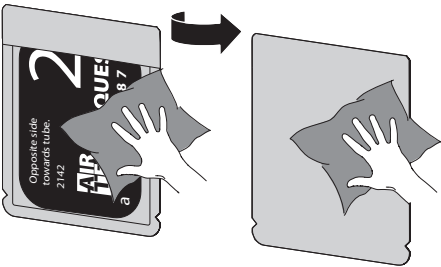
1.



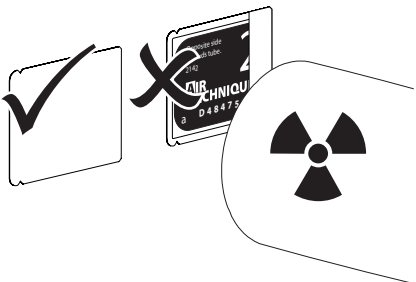
2.



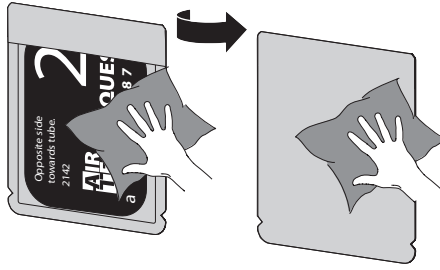
3.



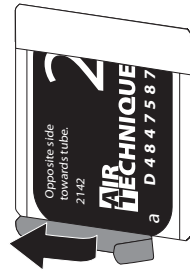
4.



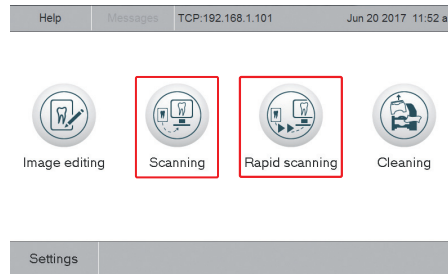
5.



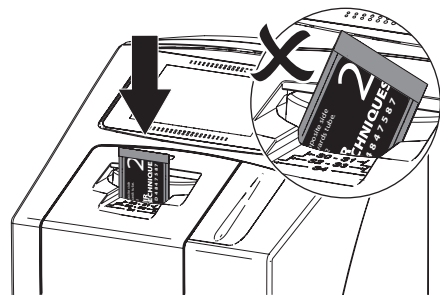
6.



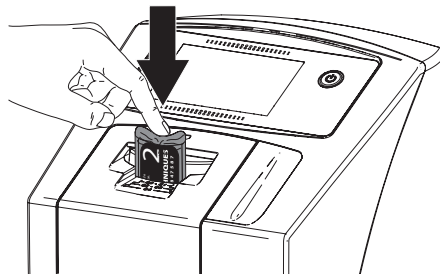
7.



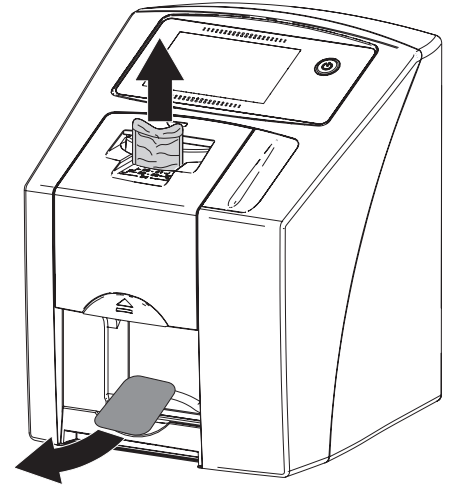
8.



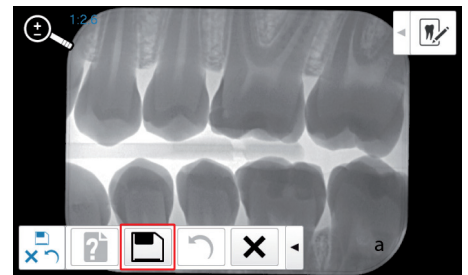
9.



10.



11.



ScanX Swift View

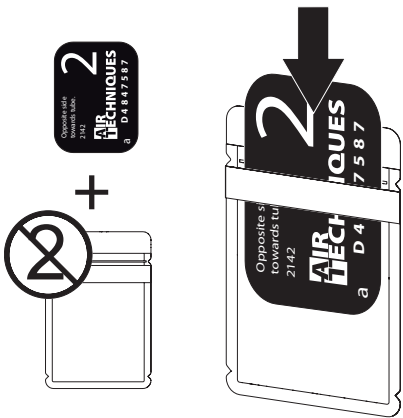
Guía rápida

La siguiente información es un complemento de las instrucciones de uso y montaje del aparato.

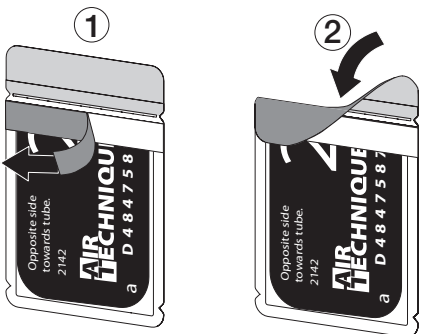
En principio, deben tenerse en cuenta además las instrucciones de uso y de montaje, en las que se describe importante información como, p. ej., advertencias de seguridad, instalación, conexión eléctrica, desinfección, limpieza, etc.

1 Lea los datos de imagen mediante el ordenador

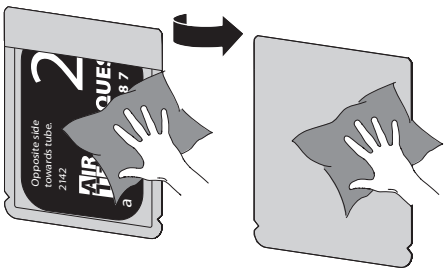
1.



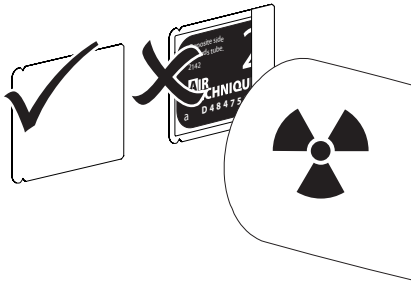
2.



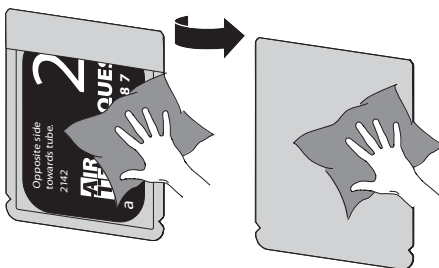
3.



4.



5.



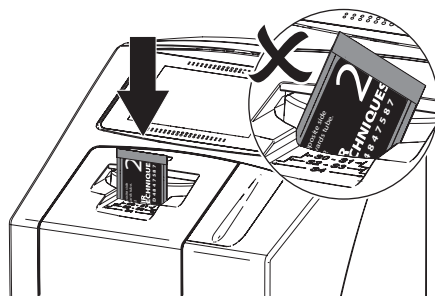
6.



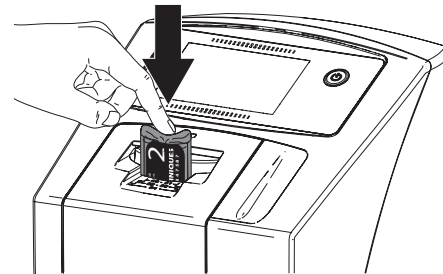
7.



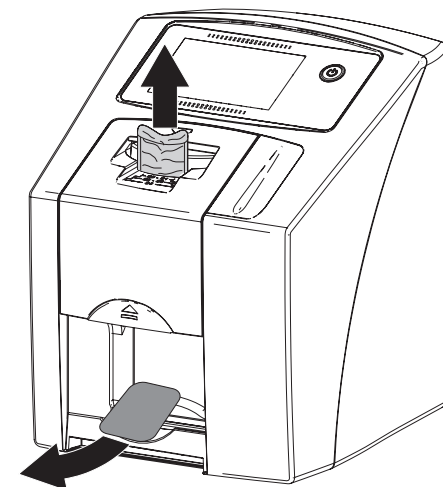
8.



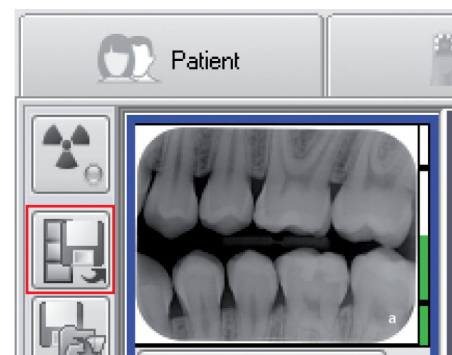
9.



10.



11.



Corporate Headquarters
1295 WALT WHITMAN ROAD
MELVILLE, NEW YORK 11747- 3062

G8504



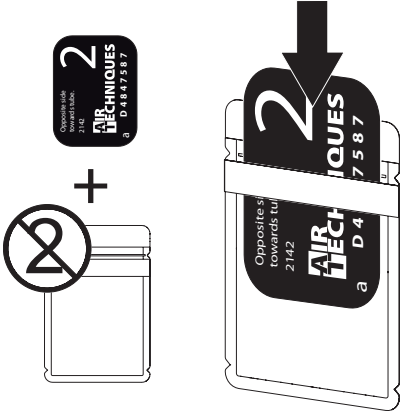
3 / 4

1707V001

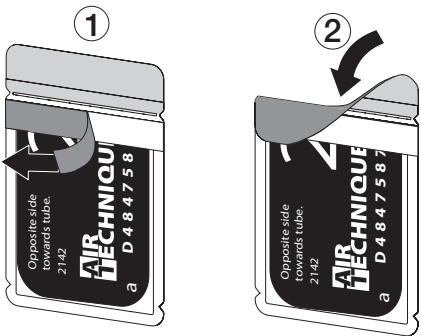
AIR TECHNIQUES equipped for life®

2 Lea los datos de imagen a través de la pantalla táctil del aparato

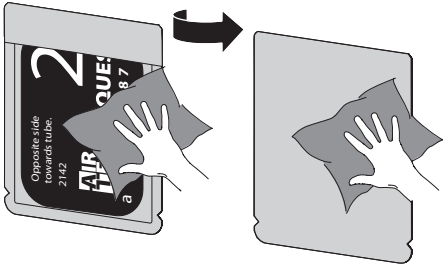
1.



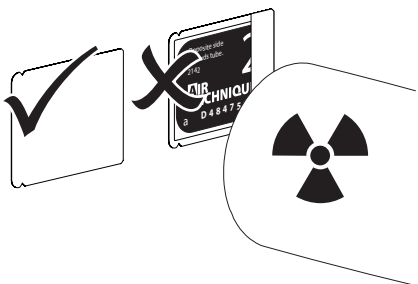
2.



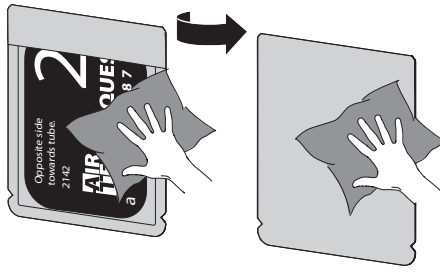
3.



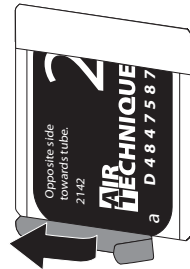
4.



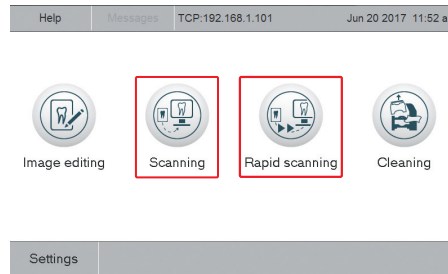
5.



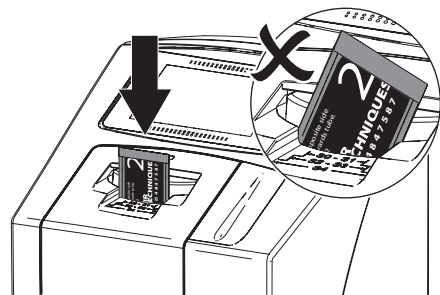
6.



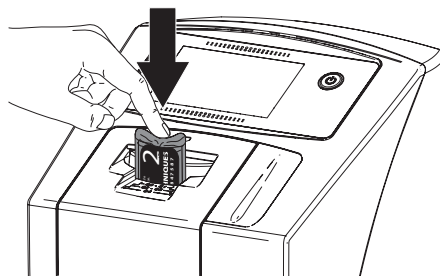
7.



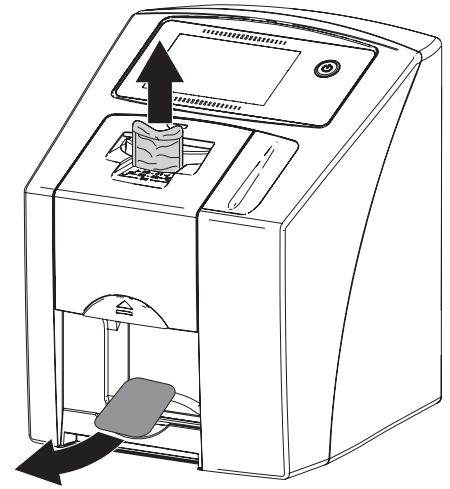
8.



9.



10.



11.

